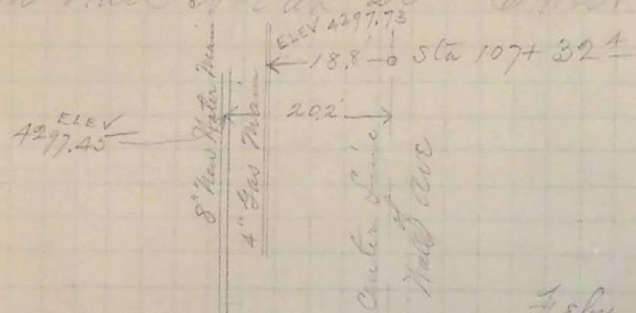


Location and Elev of Gas in Water Mains  
 on Hall Ave at 25<sup>th</sup> Street



Feb'y 23<sup>d</sup> 1891

Location and Elev of Old Sewer  
 on 25<sup>th</sup> St. Between Hall and Lincoln

Old Stone Sewer about 4' wide by 2 1/2' deep  
 with timber covering - 15 feet South of  
 center of 25<sup>th</sup> St at Sta 80+10.  
 Elev of top of timber cover = 4299.62.

Feb'y 25<sup>th</sup> 1891.